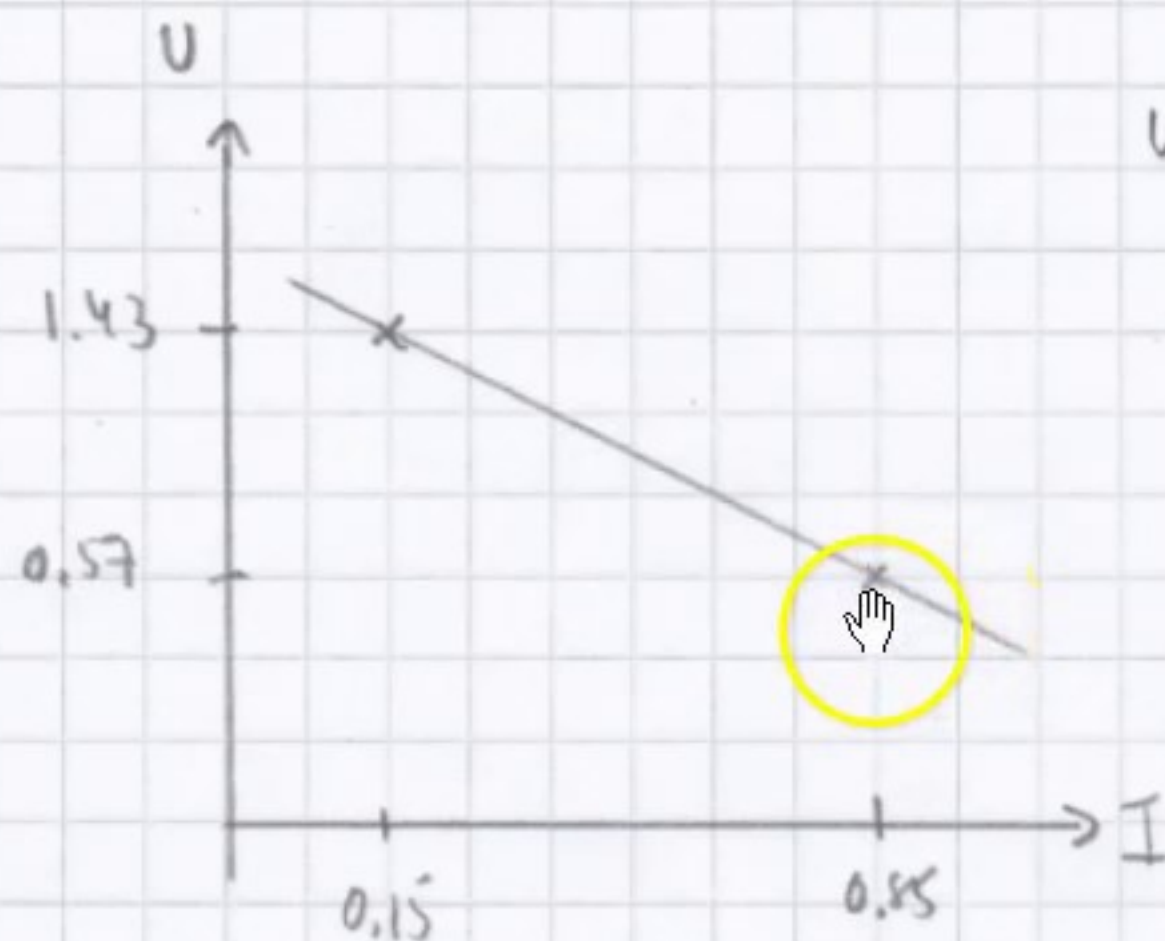


990]



$$U = \mathcal{E} - R_i \cdot I$$

$$-R_i = \frac{0.57 - 1.43}{0.85 - 0.15} \Rightarrow R_i = 1.2 \, \Omega$$

$$\mathcal{E} = U + R_i \cdot I = 1.43 + 1.2 \cdot 0.15 = 1.6 \, \text{V}$$

eller ekvationsystem