

3

The data below represent a quadratic function. Use the table to identify (approximate) the following characteristics of $f(x)$:

- x- and y-intercepts
- Interval(s) where the function is increasing and decreasing
- Interval(s) where the function is positive and negative
- Relative maximums/minimums
- The axis of symmetry.

x	-3	-2	-1	0	1	2	3	4	5	6	7
f(x)	90	64	42	24	10	0	-6	-8	-6	0	10

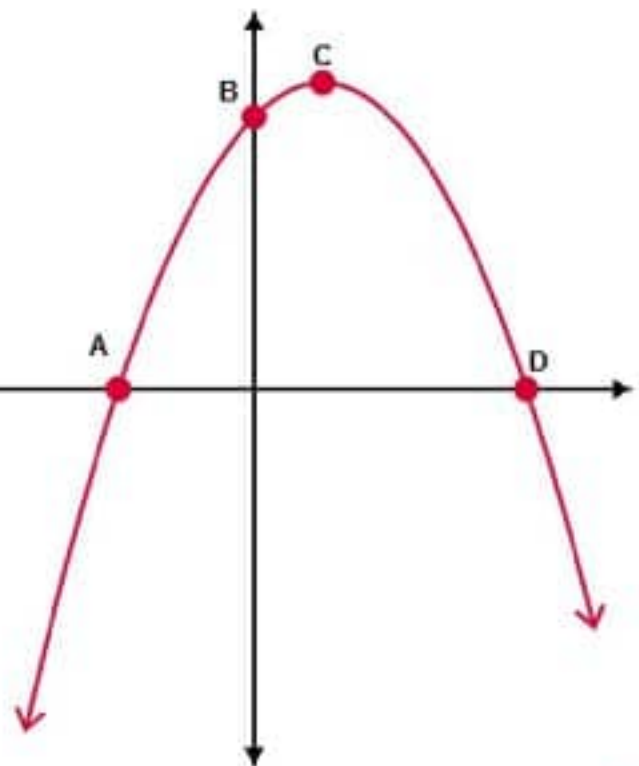
@NumberNerdzOnesies

4

$$f(x) = -\frac{1}{4}(x + 4)(x - 8)$$

$$f(x) = -\frac{1}{4}(x - 2)^2 + 9$$

$$f(x) = -\frac{1}{4}x^2 + x + 8$$



@NumberNerdzOnesies