

## 2.1 Decomposition Description

The ultrasound library is created from a single signal called beamforming, and an ultrasound 2D image in a gray scale. The process that the signal goes through is shown in [Figure 2-1](#).

This is the algorithm flow chart.

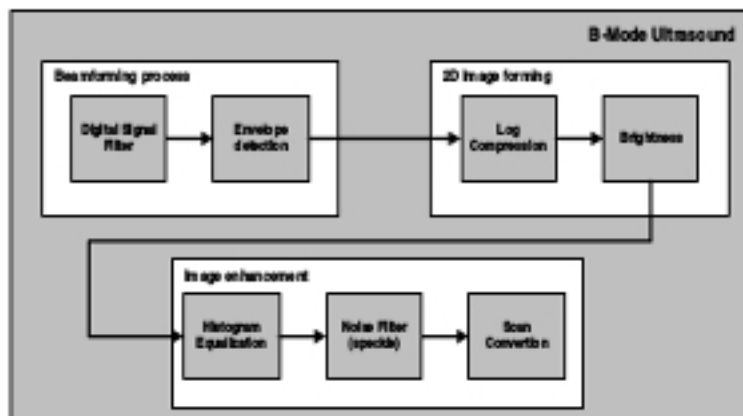


Figure 2-1. Flow chart for the main ultrasound library algorithm

### 2.1.1 Module decomposition

The ultrasound software library is divided into three main modules; each one represents a high level step in the principal algorithm.

The modules are:

- Beamforming process

#### Design Specification Document

The ultrasound software library is divided into three main modules; each one represents a high level step in the principal algorithm.