

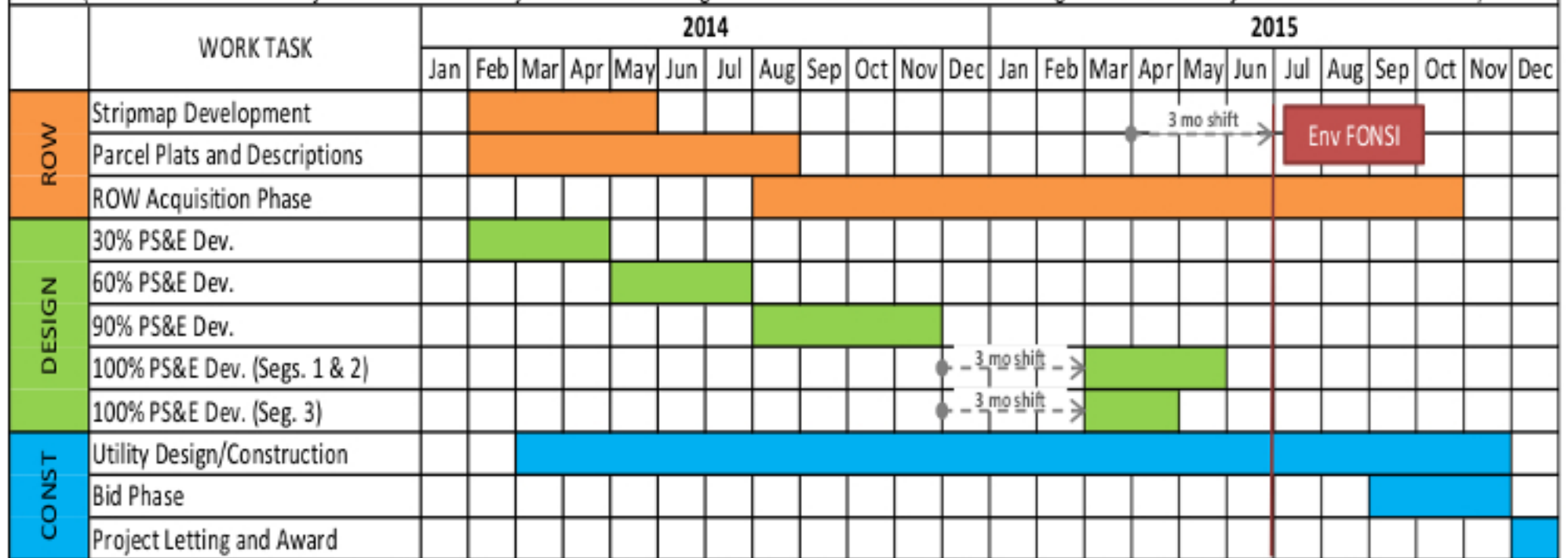
PROJECT DEVELOPMENT SCHEDULE

Program Manager: Dannenbaum Engineering Corporation

12/10/2014

SH 365 - Segments 1, 2, and 3

(FM 396 / Anzalduas Hwy. to US 281 / Mil. Hwy. incld. SP600 / Cage Blvd. to FM 2557 / Stewart Rd along US 281 / Mil. Hwy. and the BSIF Connector)



CONSTRUCTION FOR SH 365 SEGMENTS 1 & 2 02/01/2016 TO 10/30/2018 AND SH 365 SEGMENT 3: 08/01/2015 TO 12/31/2017

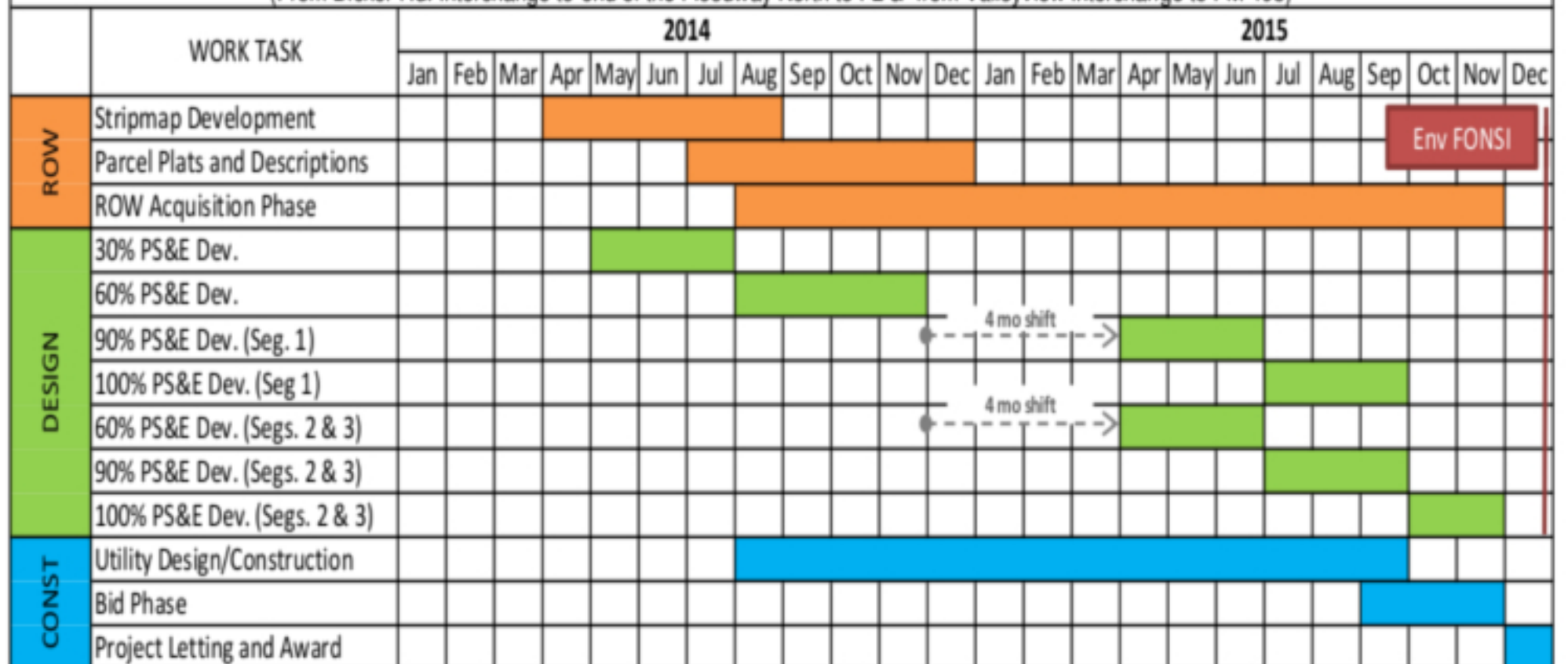
PROJECT DEVELOPMENT SCHEDULE

Program Manager: Dannenbaum Engineering Corporation

12/10/2014

IBTC - Segments 1-3

(From Dicker Rd. Interchange to end of the Floodway North to I-2 & from Valleyview Interchange to FM 493)



CONSTRUCTION FOR IBTC SEGMENTS 1 - 3: 04/01/2016 TO 10/30/2018