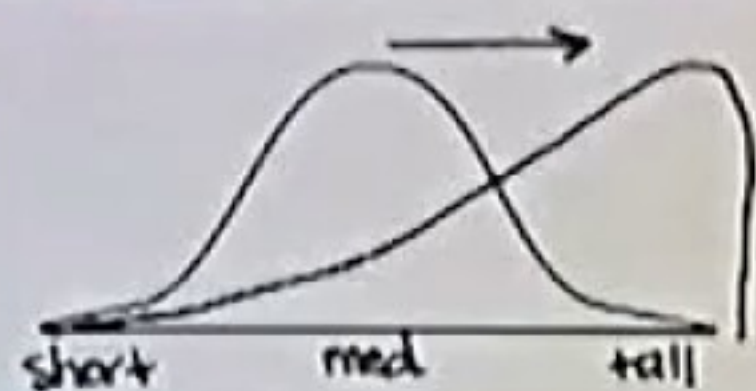


population; short and tall are present but uncommon.



Directional Selection

The most common phenotype WAS:

medium (average)

The most common phenotype IS NOW:

tall

because the graph:

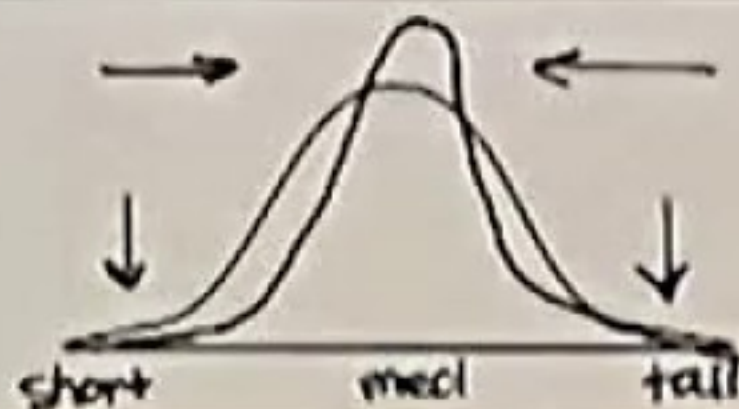
shifted toward one extreme

This will lead to:

more tall individuals

Example:

Neck lengthening giraffes



Stabilizing Selection

The most common phenotype WAS:

medium (average)

The most common phenotype IS NOW:

medium (average)

because the graph:

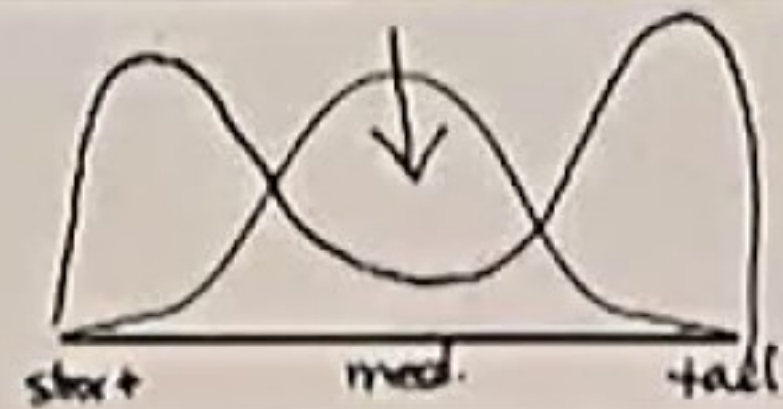
narrowed around the average

This will lead to:

more average individuals
(medium)

Example:

Number of eggs laid by birds



Disruptive Selection

The most common phenotype WAS:

medium (average)

The most common phenotype IS NOW:

short and tall

because the graph:

divided toward both

This will lead to:

extremes

more short individuals and
more tall individuals

Example:

Finch beak size