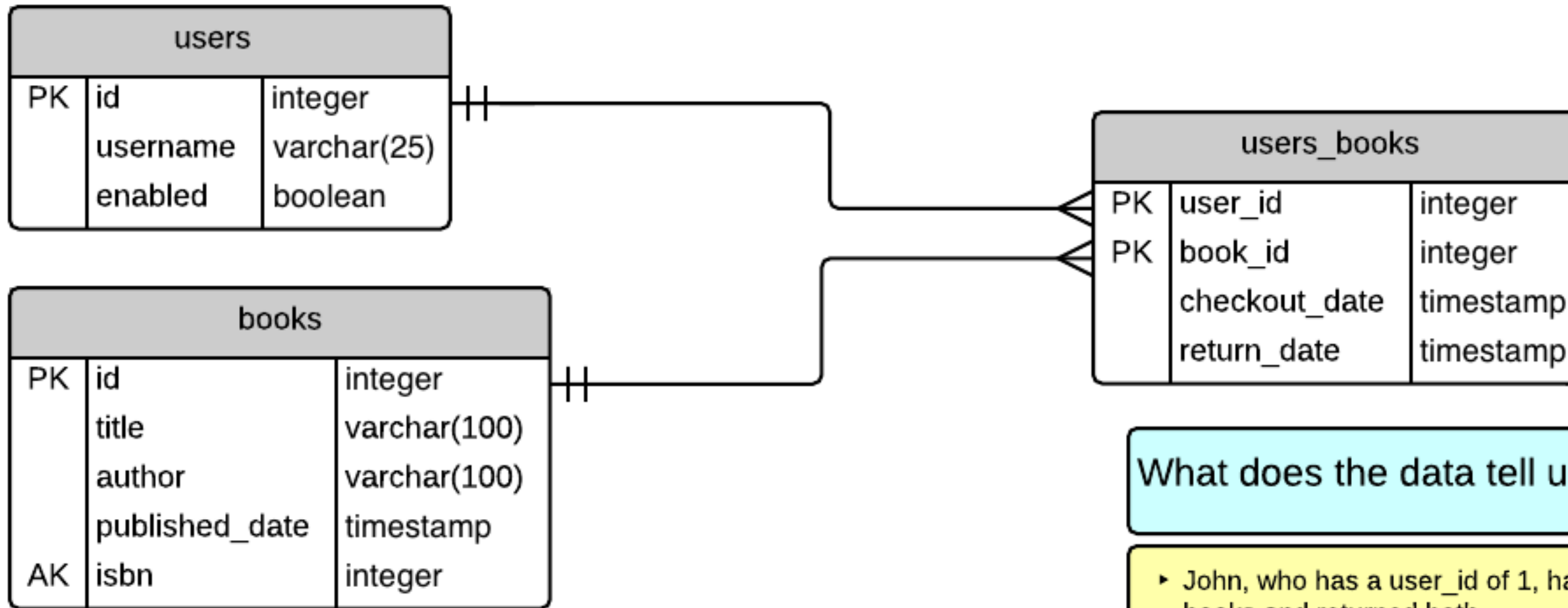


# Many-to-Many Relation



What does the data tell us ?

- ▶ John, who has a user\_id of 1, has checked out 2 books and returned both.
- ▶ Later, Jane, who has a user\_id of 2, checked out a book that John had previously checked out
- ▶ John and Jane both checked out "My Second SQL Book", which has a book\_id of 2

Users

enabled	username	id
1	John Smith	1
1	Jane Smiley	2

Books

author	title	published_date	isbn	id
Mary Parker	My First SQL book	2014-12-04	123..	1
John Mayer	My Second SQL book	2014-12-04	344...	2

Users\_books

user_id	book_id	checkout_date	return_date
1	2	11/04/2014	12/04/2014
1	1	11/02/2013	11/22/2013
2	2	12/01/2014	