

**Example 1.**  
**Graph the following quadratic function.**

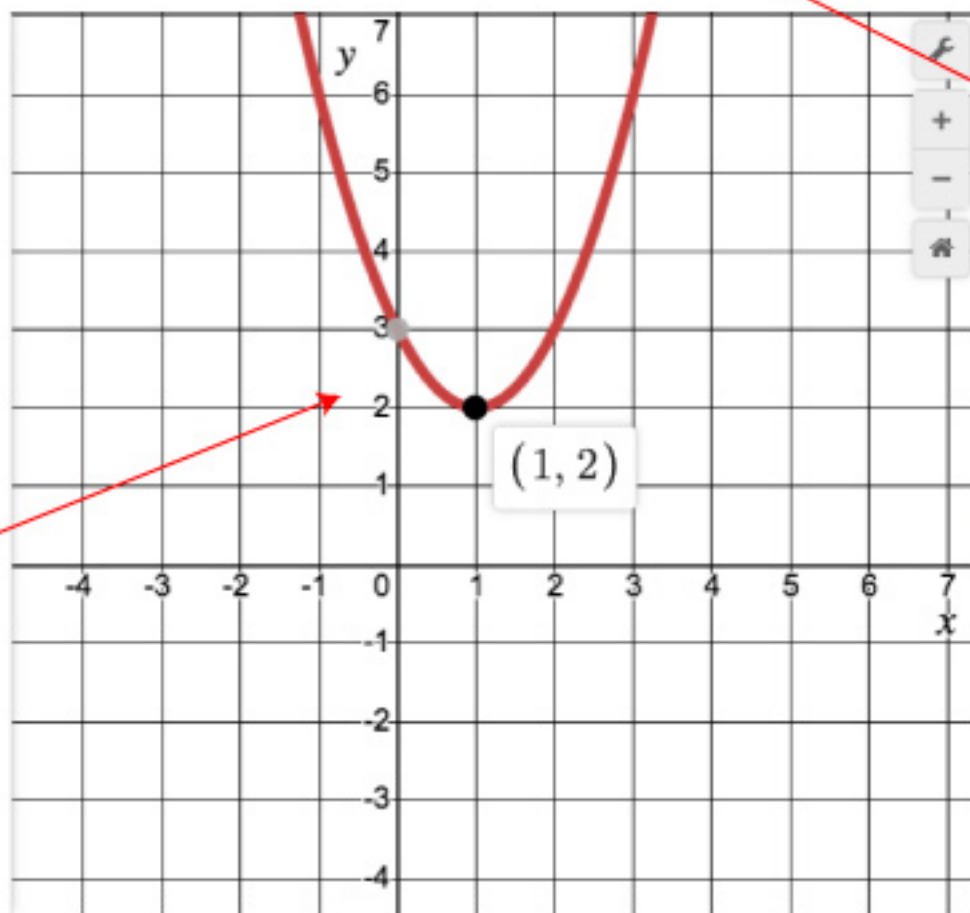
$$y = (x - 1)^2 + 2$$

**Solution.**

Quadratic in vertex form:

$$y = a(x - h)^2 + k$$

Because in this equation  $a > 0$ , the graph of the parabola opens up.



The coordinates of the vertex align with the values shown in the equation.